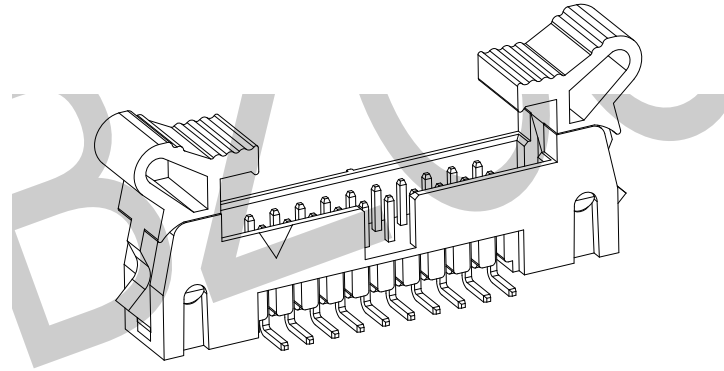
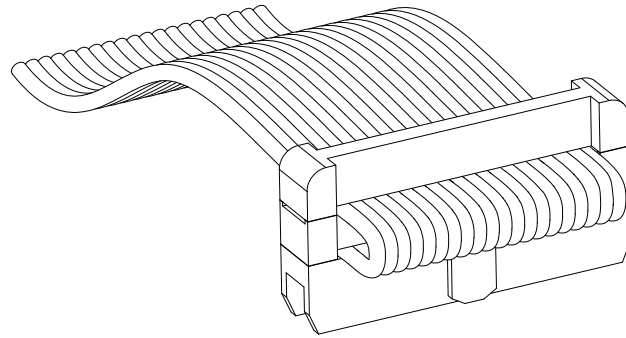




技术参数/Technical parameters

额定电流/Current Rating :2AMP
 绝缘阻抗/Insulator Resistance :1000MΩ Min.
 接触阻抗/Contact Resistance :20mΩ Max.
 耐电压值/Voltage Resistance :AC 500V
 工作温度/Operating Temperature :-40℃ ~ +105℃
 金属材料/Metallic Material :Copper alloy
 金属处理/Metal Treatment :Ni(30~50u")+See description
 绝缘材料/Insulator Material :PA6T/PA9T/LCP UL94V-0
 耐焊接热/Resistance To Soldering Heat :260° C ±5° C 10S MAX

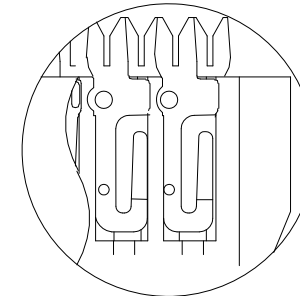
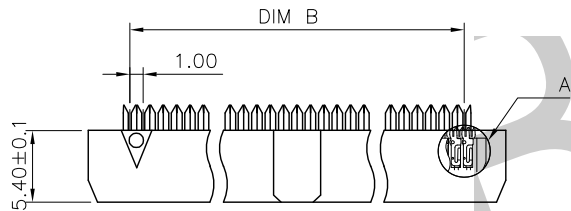
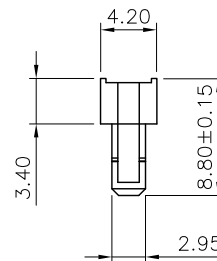
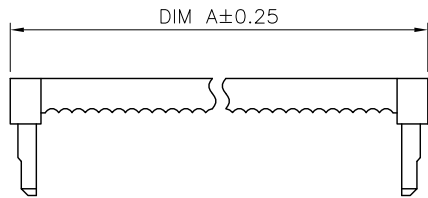
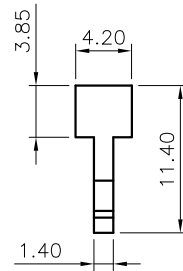
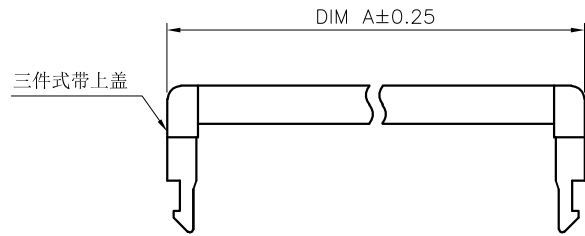


| | | | | | | | |
|--------------------------------------|------------|-----------|------------------|--|------------|--------------|--|
| TOLERANCE UNLESS OTHERWISE SPECIFIED | | | | 东莞市柏洲电子有限公司 Dongguan Bzooc Electronics, Ltd | | | |
| .X± 0.35 | X.*± 1.5* | APR. AX.T | TITLE: 2.0 牛角 系列 | | | | |
| .XX± 0.25 | .X*± 1.0* | CHK. Y.L | PART NO. | | | | |
| .XXX± 0.15 | .XX*± 0.5* | DRA. Y.L | PROJ. | UNITS. MM | SCALE: 1:1 | SHEET. 1 / 1 | |
| CUSTOMER DRAWING | | | | | | | |

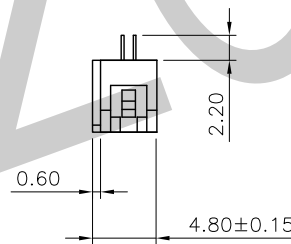
| | | | |
|------|---------------|------|------------|
| A0 | FIRST RELEASE | Y.L | 2019.06.21 |
| REV. | ECN. NO. | APR. | DATE |



MATERIAL :
 INSULATOR : PBT +GLASS FIBER UL94V-0
 CONTACT : COPPER ALLOY WITH GOLD OR
 TIN OVER NICKEL PLATED .
 SPECIFICATION:
 CURRENT RATING : 1Amp
 Withstanding voltage: AC 500v for 1 Minute.
 Insulation resistance :500M Ω MAX. AT DC 500V.
 CONTACT resistance : 20m Ω Min.
 OPERating temperature: -40°C + 105°C



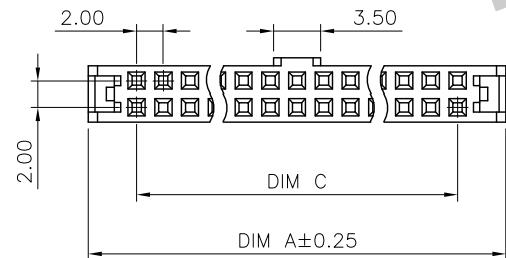
视图 A
弹片式端子



FC 200-0X-2XX-A-XX-D-000
 IDC排线头
 200:间距2.0MM
 02:两件式
 03:三件式
 PIN数:
 203:2*3P

 240:2*40P
 流水码
 包装方式
 D:盘装
 胶壳颜色:
 CY:灰色
 BK:黑色
 塑胶材质:PBT

| PIN No. | DIM A | DIM B | DIM C |
|---------|-------|-------|-------|
| 6 | 11.40 | 5.00 | 4.00 |
| 8 | 13.40 | 7.00 | 6.00 |
| 10 | 15.40 | 9.00 | 8.00 |
| 12 | 17.40 | 11.00 | 10.00 |
| 14 | 19.40 | 13.00 | 12.00 |
| 16 | 21.40 | 15.00 | 14.00 |
| 18 | 23.40 | 17.00 | 16.00 |
| 20 | 25.40 | 19.00 | 18.00 |
| 22 | 27.40 | 21.00 | 20.00 |
| 24 | 29.40 | 23.00 | 22.00 |
| 26 | 31.40 | 25.00 | 24.00 |
| 28 | 33.40 | 27.00 | 26.00 |
| 30 | 35.40 | 29.00 | 28.00 |
| 32 | 37.40 | 31.00 | 30.00 |
| 34 | 39.40 | 33.00 | 32.00 |
| 36 | 41.40 | 35.00 | 34.00 |
| 38 | 43.40 | 37.00 | 36.00 |
| 40 | 45.40 | 39.00 | 38.00 |
| 44 | 49.40 | 43.00 | 42.00 |
| 48 | 53.40 | 47.00 | 46.00 |
| 50 | 55.40 | 49.00 | 48.00 |
| 54 | 59.40 | 53.00 | 52.00 |
| 56 | 61.40 | 55.00 | 54.00 |
| 60 | 65.40 | 59.00 | 58.00 |
| 62 | 67.40 | 61.00 | 60.00 |
| 64 | 69.40 | 63.00 | 62.00 |
| 68 | 73.40 | 67.00 | 66.00 |
| 80 | 85.40 | 79.00 | 78.00 |



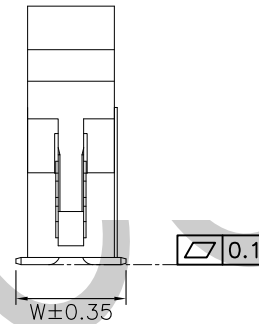
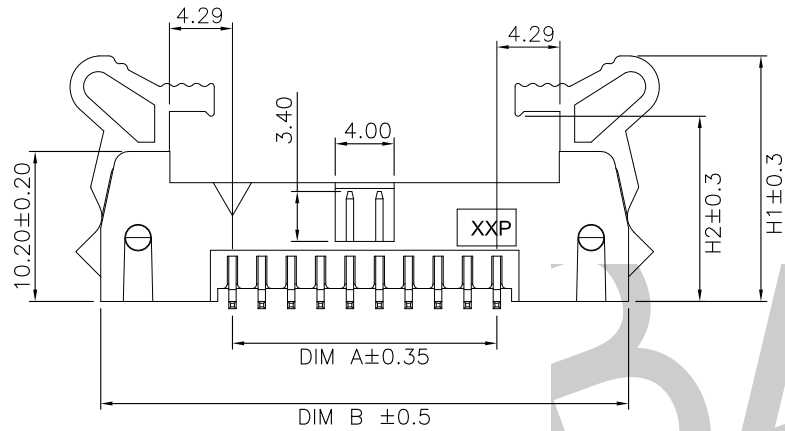
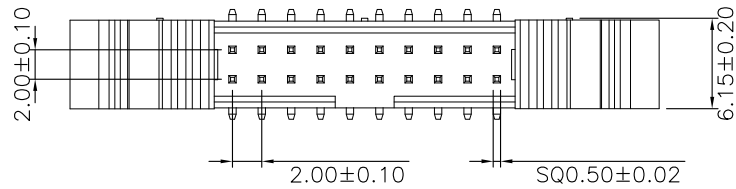
| | | | |
|------|---------------|------|------------|
| A0 | FIRST RELEASE | Y.L | 2019.06.21 |
| REV. | ECN. NO. | APR. | DATE |

| | | | |
|--------------------------------------|------------|--|--|
| TOLERANCE UNLESS OTHERWISE SPECIFIED | | 东莞市柏洲电子有限公司 Dongguan BzooC Electronics, Ltd | |
| .X± 0.35 | X.*± 1.5* | APR. AX.T | TITLE: 2.0 PITCH IDC TYPE |
| .XX± 0.25 | .X*± 1.0* | CHK. Y.L | PART NO. |
| .XXX± 0.15 | .XX*± 0.5* | DRA. Y.L | PROJ. UNITS. MM SCALE: 1:1 CUSTOMER DRAWING SHEET. 1 / 1 |



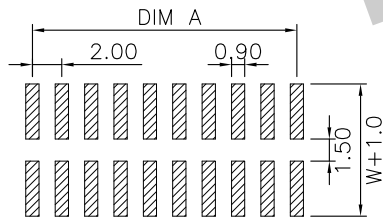
技术参数/Technical parameters

额定电流/Current Rating : 2AMP
 绝缘阻抗/Insulator Resistance : 1000MΩ Min.
 接触阻抗/Contact Resistance : 20mΩ Max.
 耐电压值/Voltage Resistance : AC 500V
 工作温度/Operating Temperature : -40°C ~ +105°C
 金属材料/Metallic Material : Copper alloy
 金属处理/Metal Treatment : Ni(30~50u")+See description
 绝缘材料/Insulator Material : PA6T/PA9T/LCP UL94V-0
 耐焊接热/Resistance To Soldering Heat : 260°C ±5°C 10S MAX



| | H1 | H2 | W |
|----|-------|-------|-------|
| 短耳 | 16.70 | 12.60 | 7.50 |
| 长耳 | 20.80 | 16.72 | (可定制) |

| PIN No. | DIM A | DIM B |
|---------|-------|-------|
| 2X5 | 8.00 | 25.92 |
| 2X6 | 10.00 | 27.92 |
| 2X7 | 12.00 | 29.92 |
| 2X8 | 14.00 | 31.92 |
| 2X10 | 18.00 | 35.92 |
| 2X13 | 24.00 | 41.92 |
| 2X15 | 28.00 | 45.92 |
| 2X17 | 32.00 | 49.92 |
| 2X20 | 38.00 | 55.92 |
| 2X22 | 42.00 | 59.92 |
| 2X25 | 48.00 | 65.92 |



Recommended PCB layout

E 200-X-2XX-WVS-GF-X-D-W75-000
 牛角
 200:间距2.0MM
 C:长耳
 D:短耳
 PIN数:
 205:2*5P

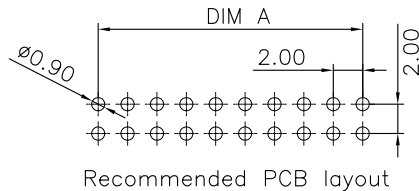
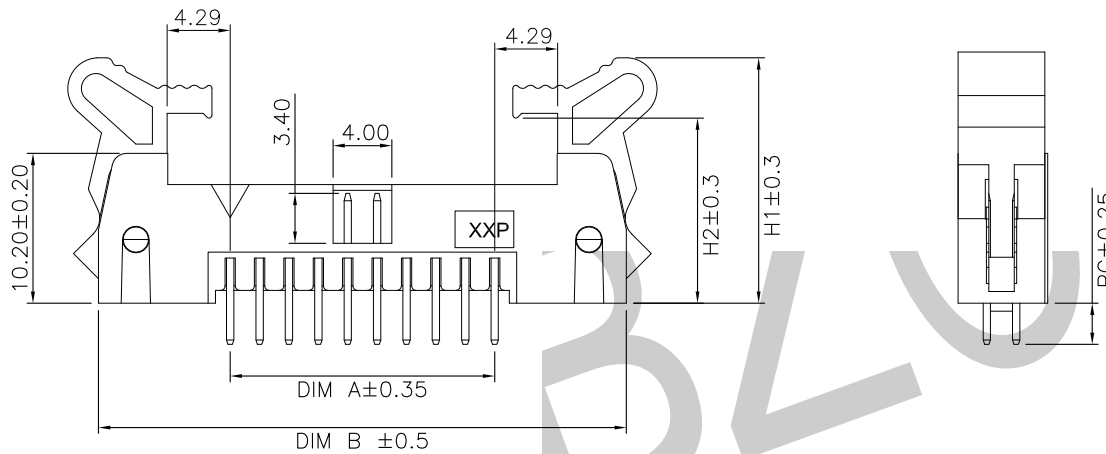
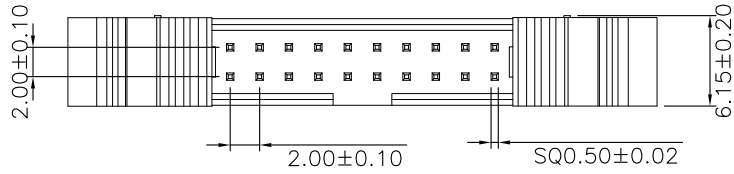
 225:2*25P
 180° -SMT
 流水码
 W:7.5MM
 D: 盒装
 塑胶材质:
 D:PA6T
 E:PA9T
 F:LCP
 电镀:
 GF:镀金
 G1:镀金 1U"

| TOLERANCE UNLESS OTHERWISE SPECIFIED | | | | BZOOC 东莞市柏洲电子有限公司 Dongguan BzooC Electronics, Ltd | |
|--------------------------------------|---------------|-----------|---------------------------|--|------------|
| .X± 0.35 | X.'± 1.5' | APR. AX.T | TITLE: 2.0 牛角 180° SMT 系列 | | |
| .XX± 0.25 | .X'± 1.0' | CHK. Y.L | PART NO. | | |
| .XXX± 0.15 | .XX'± 0.5' | DRA. Y.L | PROJ. | UNITS. MM | SCALE: 1:1 |
| A0 | FIRST RELEASE | Y.L | 2019.06.21 | CUSTOMER DRAWING | |
| REV. | ECN. NO. | APR. | DATE | SHEET. 1 / 1 | |



技术参数/Technical parameters

额定电流/Current Rating : 2AMP
 绝缘阻抗/Insulator Resistance : 1000MΩ Min.
 接触阻抗/Contact Resistance : 20mΩ Max.
 耐电压值/Voltage Resistance : AC 500V
 工作温度/Operating Temperature : -40℃ ~ +105℃
 金属材料/Metallic Material : Copper alloy
 金属处理/Metal Treatment : Ni(30~50u") + See description
 绝缘材料/Insulator Material : PA6T/PA9T/LCP UL94V-0
 耐焊接热/Resistance To Soldering Heat : 260° C ±5° C 10S MAX



| | H1 | H2 | PC |
|----|-------|-------|-------|
| 短耳 | 16.70 | 12.60 | 2.80 |
| 长耳 | 20.80 | 16.72 | (可定制) |

| PIN No. | DIM A | DIM B |
|---------|-------|-------|
| 2X5 | 8.00 | 25.92 |
| 2X6 | 10.00 | 27.92 |
| 2X7 | 12.00 | 29.92 |
| 2X8 | 14.00 | 31.92 |
| 2X10 | 18.00 | 35.92 |
| 2X13 | 24.00 | 41.92 |
| 2X15 | 28.00 | 45.92 |
| 2X17 | 32.00 | 49.92 |
| 2X20 | 38.00 | 55.92 |
| 2X22 | 42.00 | 59.92 |
| 2X25 | 48.00 | 65.92 |

E 200-X-2XX-WV-GF-X-D-D28-000
 牛角 ———— 流水码
 200:间距2.0MM ———— DIP:2.8MM
 C:长耳 ———— D: 盒装
 D:短耳
 PIN数:
 205:2*5P

 225:2*25P
 180°
 电镀:
 GF:镀金
 G1:镀金 1U"
 塑胶材质:
 D:PA6T
 E:PA9T
 F:LCP

| TOLERANCE UNLESS OTHERWISE SPECIFIED | | | | 东莞市柏洲电子有限公司 Dongguan BzooC Electronics, Ltd | |
|--------------------------------------|------------|-----------|-----------------------|--|------------|
| .X± 0.35 | X.'± 1.5' | APR. AX.T | TITLE: 2.0 牛角 180° 系列 | | |
| .XX± 0.25 | .X'± 1.0' | CHK. Y.L | PART NO. | | |
| .XXX± 0.15 | .XX'± 0.5' | DRA. Y.L | PROJ. | UNITS. MM | SCALE. 1:1 |
| REV. | ECN. NO. | APR. | DATE | CUSTOMER DRAWING SHEET. 1 / 1 | |

| | | | |
|------|---------------|------|------------|
| A0 | FIRST RELEASE | Y.L | 2019.06.21 |
| REV. | ECN. NO. | APR. | DATE |