

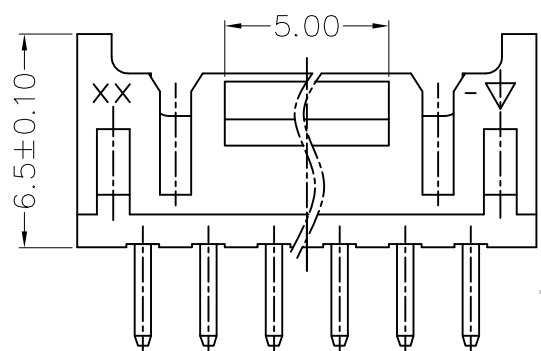
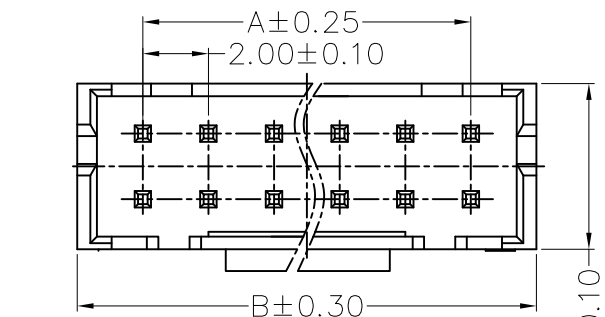


RoHS
Compliant

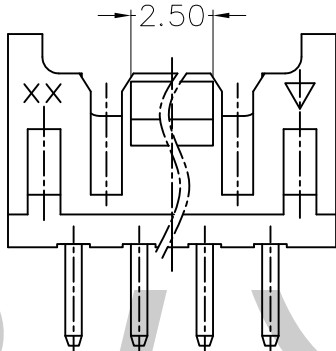
PIN No.	Dimensions		PIN No.	Dimensions	
	A	B		A	B
2X2P	2.00	6.00	2X12P	22.00	26.00
2X3P	4.00	8.00	2X13P	24.00	28.00
2X4P	6.00	10.00	2X14P	26.00	30.00
2X5P	8.00	12.00	2X15P	28.00	32.00
2X6P	10.00	14.00	2X16P	30.00	34.00
2X7P	12.00	16.00	2X17P	32.00	36.00
2X8P	14.00	18.00	2X18P	34.00	38.00
2X9P	16.00	20.00	2X19P	36.00	40.00
2X10P	18.00	22.00	2X20P	38.00	42.00
2X11P	20.00	24.00			

SPECIFICATIONS

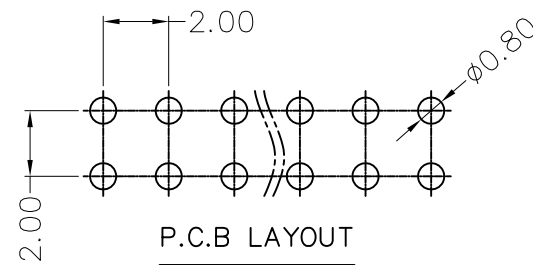
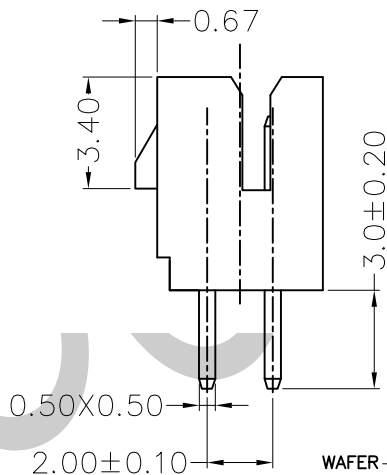
- 1) Voltage rating: 250V AC,DC.
- 2) Current rating: 3A AC,DC.
- 3) Withstanding voltage: 800V AC/minute.
- 4) Insulation resistance: 1,000M Omega min.
- 5) Temperature range: -25~+85°.
- 6) Contact resistance: Initial value/10m omega max, after environmental testg /20m omega max.
- 7) Poles: 4-40
- 8) Material: Contact: Brass, Tin plated
Base: PA66 UL94v-0
- 9) Qty: 1000pcs/bag



2x6P-2x20P



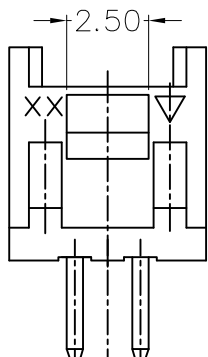
2x4P&2x5P



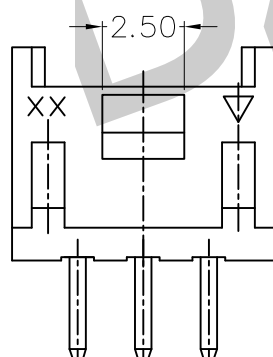
P.C.B LAYOUT

WAFER W 200-050-2XX-WV-SN-C-P-PC-000
 200:间距2.0MM 流水码
 05WAFER TYPE5 PC:本色
 0:UL94V-0 P:袋装
 PIN: C:PA66
 202:2*2P SN:镀锡
 203:2*3P

 225:2*25P



2X2P



2X3P

A0	FIRST RELEASE	Y.L	2019.06.21
REV.	ECN. NO.	APR.	DATE

TOLERANCE UNLESS OTHERWISE SPECIFIED		BZOC 东莞市柏洲电子有限公司 Dongguan Bzoc Electronics, Ltd	
.X± 0.35	X.'± 1.5'	APR. AX.T	TITLE: 2.00MM PITCH 180° DOUBLE ROW WAFER TYPE5
.XX± 0.25	.X'± 1.0'	CHK. Y.L	PART NO.
.XXX± 0.15	.XX'± 0.5'	DRA. Y.L	PROJ.
			UNITS. MM SCALE: 1:1 SHEET. 1/1
			CUSTOMER DRAWING



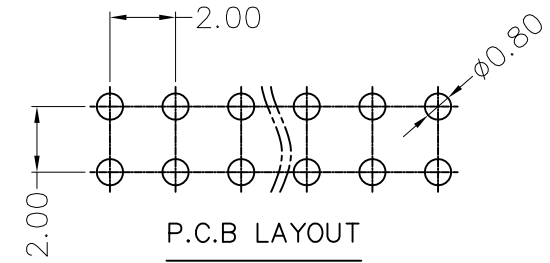
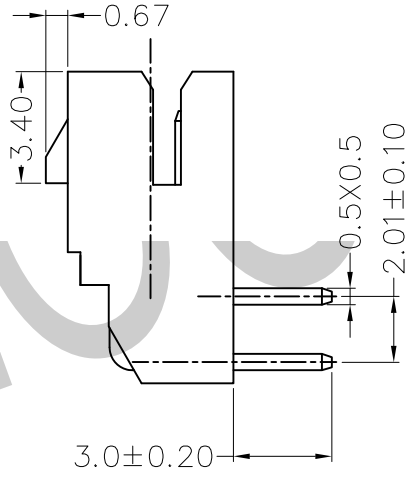
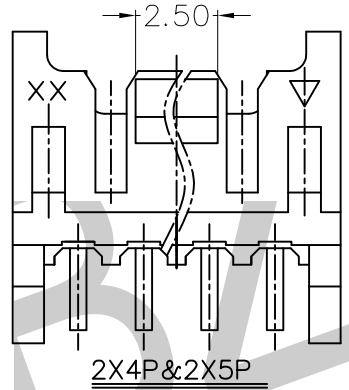
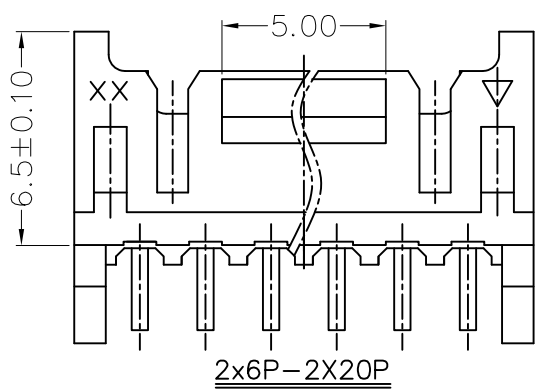
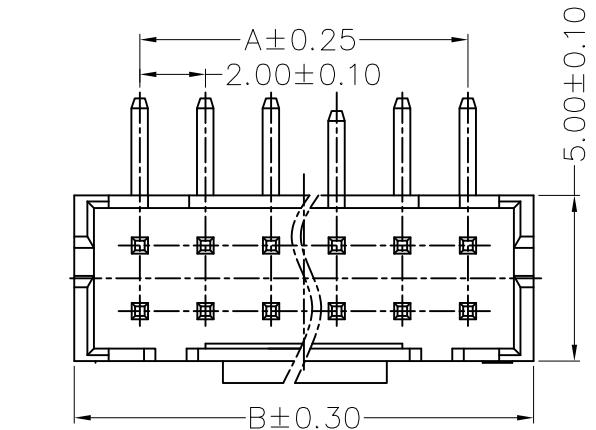
PIN No.	Dimensions		PIN No.	Dimensions	
	A	B		A	B
2X2P	2.00	6.00	2X12P	22.00	26.00
2X3P	4.00	8.00	2X13P	24.00	28.00
2X4P	6.00	10.00	2X14P	26.00	30.00
2X5P	8.00	12.00	2X15P	28.00	32.00
2X6P	10.00	14.00	2X16P	30.00	34.00
2X7P	12.00	16.00	2X17P	32.00	36.00
2X8P	14.00	18.00	2X18P	34.00	38.00
2X9P	16.00	20.00	2X19P	36.00	40.00
2X10P	18.00	22.00	2X20P	38.00	42.00
2X11P	20.00	24.00			

SPECIFICATIONS

- 1) Voltage rating: 250V AC,DC.
- 2) Current rating: 3A AC,DC.
- 3) Withstanding voltage: 800V AC/minute.
- 4) Insulation resistance: 1,000M Omega min.
- 5) Temperature range: -25~+85°.
- 6) Contact resistance: Initial value/10m omega max, after environmental testg /20m omega max.
- 7) Poles: 4-40
- 8) Material: Contact: Brass, Tin plated
Base: PA66 UL94v-0
- 9) Qty: 1000pcs/bag

A
B
C
D
E
F

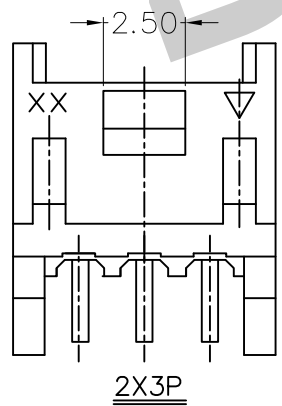
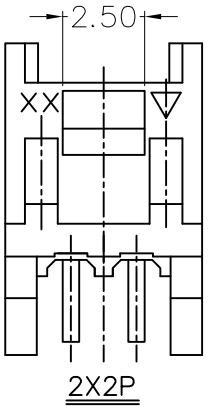
A
B
C
D
E
F



WAFER W 200-050-2XX-WR-SN-C-P-PC-000
 200:间距2.0MM
 05WAFER TYPE5
 0:UL94V-0
 PIN:
 202:2*2P
 203:2*3P

 225:2*25P

流水码
 PC:本色
 P: 袋装
 C:PA66
 SN:镀锡



A0	FIRST RELEASE	Y.L	2019.06.21
REV.	ECN. NO.	APR.	DATE

TOLERANCE UNLESS OTHERWISE SPECIFIED		东莞市柏洲电子有限公司 Dongguan BzooC Electronics, Ltd	
.X± 0.35	X.'± 1.5'	APR. AX.T	TITLE: 2.00MM PITCH 90° DOUBLE ROW WAFER TYPE5
.XX± 0.25	.X'± 1.0'	CHK. Y.L	PART NO.
.XXX± 0.15	.XX'± 0.5'	DRA. Y.L	PROJ. UNITS. MM SCALE: 1:1 SHEET. 1 / 1
		CUSTOMER DRAWING	

1 2 3 4 5 6 7 8